

Operating Manual



ShuttlePro

ShuttlePro - the command center for Perseus

Combines the benefits of an analogue VFO knob with the various options of a Software Defined Receiver: 15 free definable buttons allow direct access to all important settings.

The following description applies to usage of the ShuttlePro together with a Perseus SDR. Furthermore the ShuttlePro may be used in conjunction with other software applications and units.

Installation:

Operation is based upon the scripting program AutoHotkey, which is accessible free of charge:

<http://www.autohotkey.com/download/>

Download the Installer and install the software by doubleclick.

You will get a prepared script for control of the Perseus at:

http://www.ssb.de/product_info.php?language=en&info=p1662_Shuttle-Pro-V2.html

You will have to decompress the files after download (using Winzip or Winrar); store them in the same directory that contains the Perseus Software.

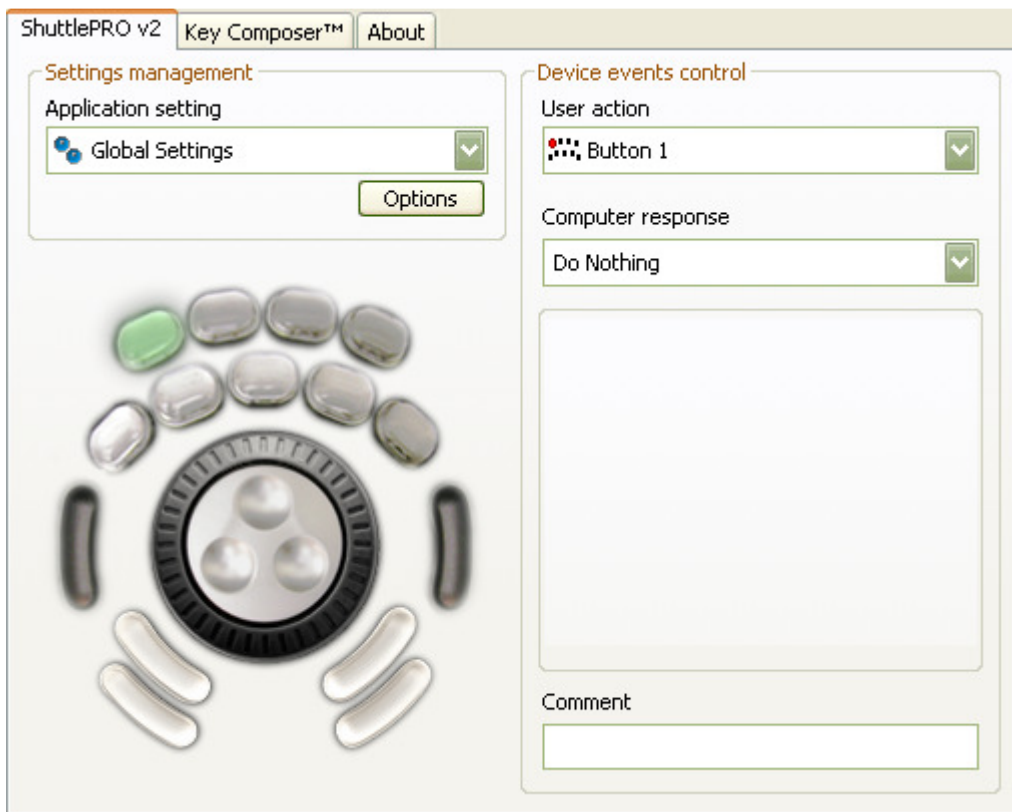
Insert the ShuttlePro Installation-CD in the CD drive and connect your ShuttlePro to a free USB port of your computer. Follow the instructions on the screen.

After finishing the installation open the ShuttlePro Control Panel.

Operating Manual



ShuttlePro



By clicking the button „Options“ a dialogue window will appear.

Choose the command „Import Settings“.

Now select the path that leads to the Perseus script by clicking on the directory icons:

Desktop – Drive C – Programs – Perseusv21f – Perseus.pref.

If you should have installed several versions of the Perseus software, choose the directory of the version you want to use together with ShuttlePro.

Finally click on „Open“.

Operation:

Start the Autohotkey program by doubleclicking *PerseusKeyboard.ahk*.

The following presets are available (bold characters correspond to the particular shortcut in the ShuttlePro Control Panel).

Operating Manual



ShuttlePro

Upper bank of buttons:
Second bank of buttons:

Mute – **Noise Blanker** – **Noise Reduction** – **Spike Rej.**
AM – **SAM** – **CW** – **LSB** – **USB**

Jog Wheel (rubberized knob)

Quick frequency tuning (down: **<** up: **Shift <**)
Select absolute value with „CF Step“

Inner Wheel

Slow frequency tuning
(down: **Arrow right** up: **Arrow left**)
Select absolute value with „Wheel Step“

Black button left
Black button right
Inner button left
Outer button left
Inner button right

Spectrum display
Waterfall display
Zoom in Spectrum / Waterfall (**Arrow down**)
Zoom out Spectrum / Waterfall (**Arrow up**)
Increase tuning steps of the inner wheel
(**Page up**)

Outer button right

Decrease tuning steps of the inner wheel
(**Page down**)

List of available commands

Left Arrow Key
Shift + Left Arrow Key
Right Arrow Key
Shift + Right Arrow Key
Arrow Key up
Arrow Key down
Window up
Window down
a, s, c, r, l, u, f, d, e

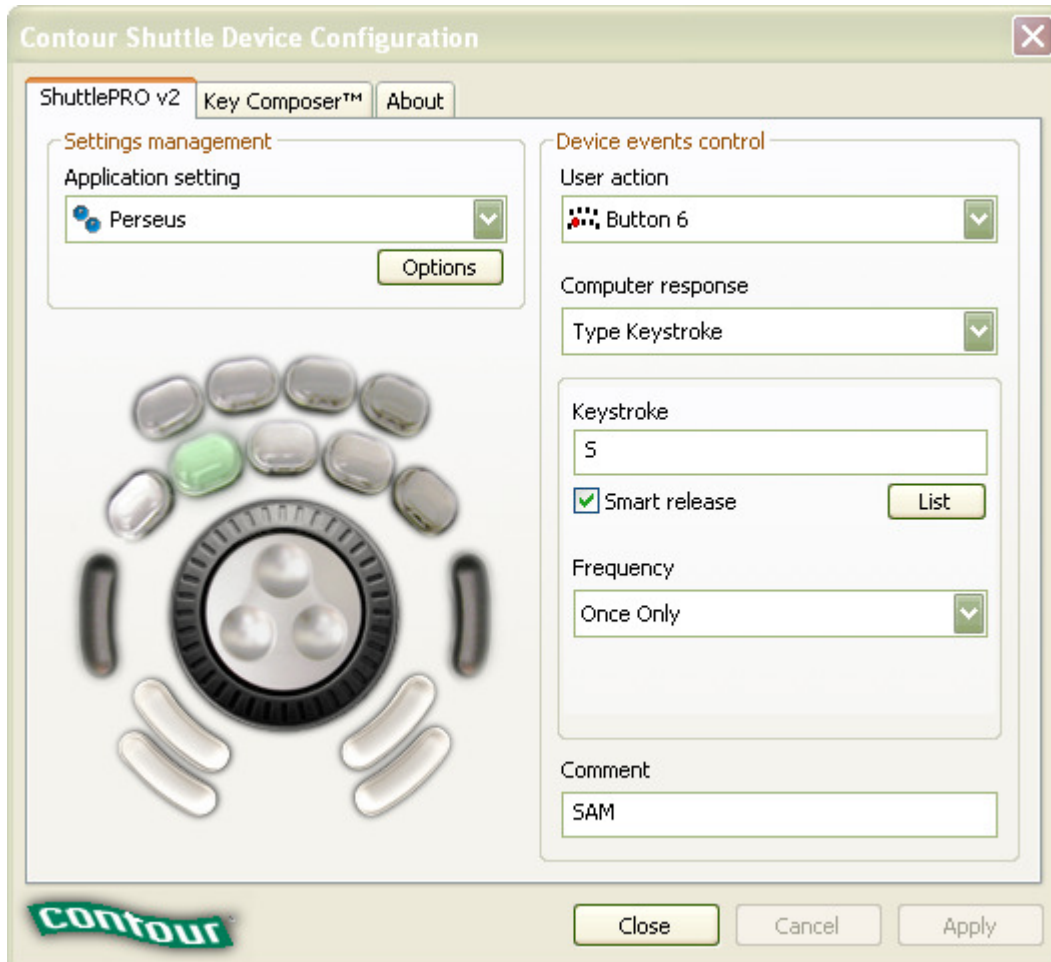
Mouse scrollwheel up
10x Mouse scrollwheel up
Mouse scrollwheel down
10x Maus Scrollrad abwärts
Increase Waterfall display
Decrease Waterfall display
Increase wheel step
Decrease wheel step
Activates Modes: AM, SAM, CW, RTTY, LSB, USB, FM, DRM, User
Activates / Deactivates "SpkRej"
Activates / Deactivates Mute
Close Perseus (= ALT-F4)
Increase "CF STEP"
Decrease "CF STEP"
Change to waterfall display
Change to spectrum display
Activates / Deactivates Noise Blanker
Activates / Deactivates Noise Reduction

v
m
x
>
<
w
t
b
k

Operating Manual



ShuttlePro



On the left the settings for the SAM mode (Synchronous detector) are shown, valid for the green marked button. To change this command, type the desired function in the „Keystroke“ field (e.g. „r“ for RTTY). Confirm with „Apply“.

To use the Perseus-specific commands, the Perseus window has to have the focus (mark the Perseus window by one mouse click).

Specifications:

Applicable under Windows 98, 98SE, ME, 2000, XP, Vista, Windows 7
Up-to date drivers can be found here: <http://retail.contourdesign.com/?/products/23>
Free USB Port and 3 MB available disk space;
USB 2.0 (compatible USB 1.1)
Cable length ca. 1,80 m
Dimensions: ca. 11 x 3 x 20 cm
Weight: ca. 200 g
Included in delivery: Shuttle Pro, CD, printed and printable labels
(To insert the labels, lift the transparent covers of the buttons carefully.)

Operating Manual



ShuttlePro

Disposal of your old appliance



This product is covered by the European Community directive 2002/96/EC. 2. All electrical and electronic products should be disposed off separately from the municipal waste stream via designated collection facilities appointed by the government or by the local authorities. The correct disposal of your old appliance will help prevent potential negative consequences for the environment and the human health.

For more detailed information about the disposal of your old appliance, please consult your city office, waste disposal service or the shop where you purchased the product.

Within Germany, above regulations are valid also for disposal of batteries and accumulators accordingly. The WEE-Reg.-Nr. of SSB-Electronic is: DE 60777502



Herewith we declare that the product DCM-2 Converter complies with all relevant regulations for the product within the guidelines 73/23/EWG, 89/336/EWG and 99/5/EG of the Council:

EN 301 489-15 Electromagnetic compatibility and Radio Spectrum Matters (ERM) Electromagnetic Compatibility (EMC) standard for radio equipment and services.

Part 15: specific conditions for commercially available amateur radio equipment.

EN 301 783-1 Electromagnetic compatibility and Radio Spectrum Matters (ERM); Land Mobile Service; commercially available amateur radio equipment.

Part 1: technical characteristics and methods of measurement.

EN 301 783-2 Electromagnetic compatibility and amateur radio equipment.

Part 2: harmonized En covering essential requirements under article 3.2 of the R&TTE Directive EN 60950-1:2001 Information technology equipment - safety.

Part 1: General requirements.

© 2009 by SSB-Electronic GmbH, Handwerkerstr. 19, 58638 Iserlohn, Deutschland

Fon: +49-(0)2371-9590-0; Fax: -20; e-Mail: vertrieb@ssb-electronic.de or sales@ssb-electronic.com ; Web: www.ssb-electronic.com

Management: Peter Schulte-Nölle, Registergericht Iserlohn, HRB 1106
VAT-ID-Nr.: DE 125580304, Tax number: 328/5707/0355

*SSB-Electronic GmbH * Handwerkerstraße 19 * Iserlohn/Germany
Copyright * All rights preserved*