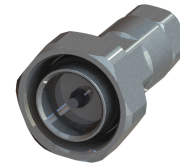




**716M-SCF14-E01**

7-16 DIN Male Connector for 1/4" Coaxial Cable, OMNI FIT™ Premium, Straight, O-Ring and 360° compression sealing



OMNI FIT™ high performance connectors are designed for use with both CELLFLEX® (copper) and CELLFLEX® Lite (aluminium) cables. They are designed specifically to provide the highest quality connector-cable interface while simplifying and speeding up connector attachment. All RFS connectors are fully tested for mechanical and electrical compliance to industry specifications.

The 7-16 connector is the most rugged RF connection meeting all requirements even under the most severe environmental conditions. Sealing against outer conductor and jacket by means of o-ring and 360° compression fit.

**FEATURES / BENEFITS**

- Ultra high PIM performance i.e. reduced interference leading to high customer satisfaction
- Two-piece design i.e. visual inspection of interlocking leads to improved installation security
- OMNI FIT™ concept i.e. streamlined order management and reduced stock level
- Watertight sealing in mated and unmated condition, i.e. reduced efforts during installation and improved security during operation
- Tri metal alloy plating i.e. extreme resistance against corrosion even under hardest climatic and environmental circumstances
- Multi-thread (Tristart) design i.e. simplified and accelerated tightening process
- RoHS (EU) and CRoHS (China) compliant i.e. can be used on a global basis

**Technical features**

**GENERAL SPECIFICATIONS**

Transmission Line Type		Coaxial Cable
Cable Size		1/4
Cable Type		Foam Dielectric Superflexible
Model Series		SCF14-50 Series
Connector Interface		7-16 DIN
Connector Type		OMNI FIT™ PREMIUM Straight
Sealing Method		O-ring + 360° Compression
Gender		Male

**ELECTRICAL SPECIFICATIONS**

Nominal Impedance, ohms	Ohm	50
3rd Order IM Product @ 2x20 Watts	dBc	-163 ; typical -167
Maximum Frequency	GHz	6
VSWR, Return Loss	VSWR (dB)	0 <math>\leq f \leq 1.0 \text{ GHz}</math>: 1.03 (37) 1.0 <math>\leq f \leq 2.2 \text{ GHz}</math>: 1.06 (31) 2.2 <math>\leq f \leq 2.7 \text{ GHz}</math>: 1.08 (28) 2.7 <math>\leq f \leq 3.8 \text{ GHz}</math>: 1.12 (25) 3.8 <math>\leq f \leq 5.0 \text{ GHz}</math>: 1.17 (22) 5.0 <math>\leq f \leq 6.0 \text{ GHz}</math>: 1.22 (20)

**MECHANICAL SPECIFICATIONS**

Plating Outer/Inner		Tri metal alloy / Silver
Length	mm (in)	55 (2.165)
Outer Diameter	mm (in)	20 (0.787)
Inner Contact Attachment		Spring Finger
Outer Contact Attachment		360° clamping



**716M-SCF14-E01**

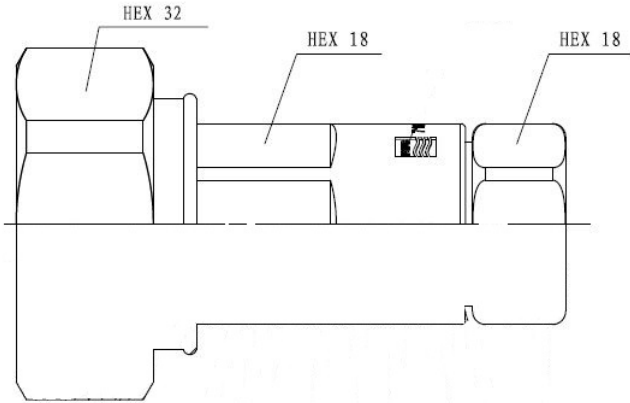
7-16 DIN Male Connector for 1/4" Coaxial Cable, OMNI FIT™ Premium, Straight, O-Ring and 360° compression sealing

**ACCESSORIES**

Wrench size front	mm (in)	32 / 18
Wrench size rear	mm (in)	18
Trimming Tool		TRIM-SCF14-D01-A

**TESTING AND ENVIRONMENTAL**

Waterproof Level		IP68
------------------	--	------



[External Document Links](#)  
[Installation Instruction](#)

[Notes](#)