

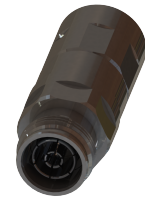


43F-LCF12-E01

4.3-10 Female Straight Connector for 1/2" Coaxial Cable, OMNI FIT™ Premium, O-Ring and compression sealing

OMNI FIT™ high performance connectors are designed for use with both CELLFLEX® (copper) and CELLFLEX® Lite (aluminium) cables. They are designed specifically to provide the highest quality connector-cable interface while simplifying and speeding up connector attachment. All RFS connectors are fully tested for mechanical and electrical compliance to industry specifications.

The 4.3-10 connector is an innovative, space-saving RF connection meeting all requirements even under the most severe environmental conditions and not relying on coupling nut torque. Sealing against outer conductor and jacket by means of the o-ring and 360° compression fit. Multifunctional, self-lubricating HighTech polymer assembly locks on cable corrugation, avoids electrochemical potential differences and compression-fits to the jacket.



FEATURES / BENEFITS

- Ultra high PIM performance i.e. reduced interference leading to high customer satisfaction
- Two-piece design i.e. visual inspection of interlocking leads to improved installation security
- OMNI FIT™ concept i.e. streamlined order management and reduced stock level
- Watertight sealing in mated and unmated condition, i.e. reduced efforts during installation and improved security during operation
- Tri metal alloy plating i.e. extreme resistance against corrosion even under hardest climatic and environmental circumstances
- Multi-thread (Tristart) design i.e. simplified and accelerated tightening process
- RoHS (EU) and CRoHS (China) compliant i.e. can be used on a global basis

Technical features

GENERAL SPECIFICATIONS

Transmission Line Type		Coaxial Cable
Cable Size		1/2
Cable Type		Foam Dielectric
Model Series		LCF12-50 Series, ICA12-50 Series, RCF12-50 Series
Connector Interface		4.3-10
Connector Type		OMNI FIT™ PREMIUM Straight
Sealing Method		Sealing Rubber + 360° Clamping
Gender		Female

ELECTRICAL SPECIFICATIONS

Nominal Impedance, ohms	Ohm	50
3rd Order IM Product @ 2x20 Watts	dBc	-163 ; typical -167
Maximum Frequency	GHz	6.0
VSWR, Return Loss	VSWR (dB)	0 < f ≤ 1.0 GHz: 1.02 (40.1) 1.0 < f ≤ 2.2 GHz: 1.03 (37) 2.2 < f ≤ 2.7 GHz: 1.03 (36) 2.7 < f ≤ 3.8 GHz: 1.06 (31) 3.8 < f ≤ 5.0 GHz: 1.11 (26) 5.0 < f ≤ 6.0 GHz: 1.15 (23)

MECHANICAL SPECIFICATIONS

Plating Outer/Inner		NiTIn/Silver
Length	mm (in)	62.7 (2.47)
Outer Diameter	mm (in)	25 (0.98)
Inner Contact Attachment		Basket
Outer Contact Attachment		360° clamping



43F-LCF12-E01

4.3-10 Female Straight Connector for 1/2" Coaxial Cable, OMNI FIT™ Premium, O-Ring and compression sealing

ACCESSORIES

Wrench size front	mm (in)	22 (7/8)
Wrench size rear	mm (in)	22 (7/8)
Trimming Tool		TRIM-SET-L12-D01, TRIM-LCF12-D01-A

TESTING AND ENVIRONMENTAL

Waterproof Level		IP68
STORAGE TEMPERATURE CF	°C (°F)	-10 to 40 (14 to 104)
OPERATION TEMPERATURE CF	°C (°F)	-40 to 85 (-40 to 185)

External Document Links

[Installation Instruction](#)

Notes